

Installation instructions for the CTCSS Board



Shawn

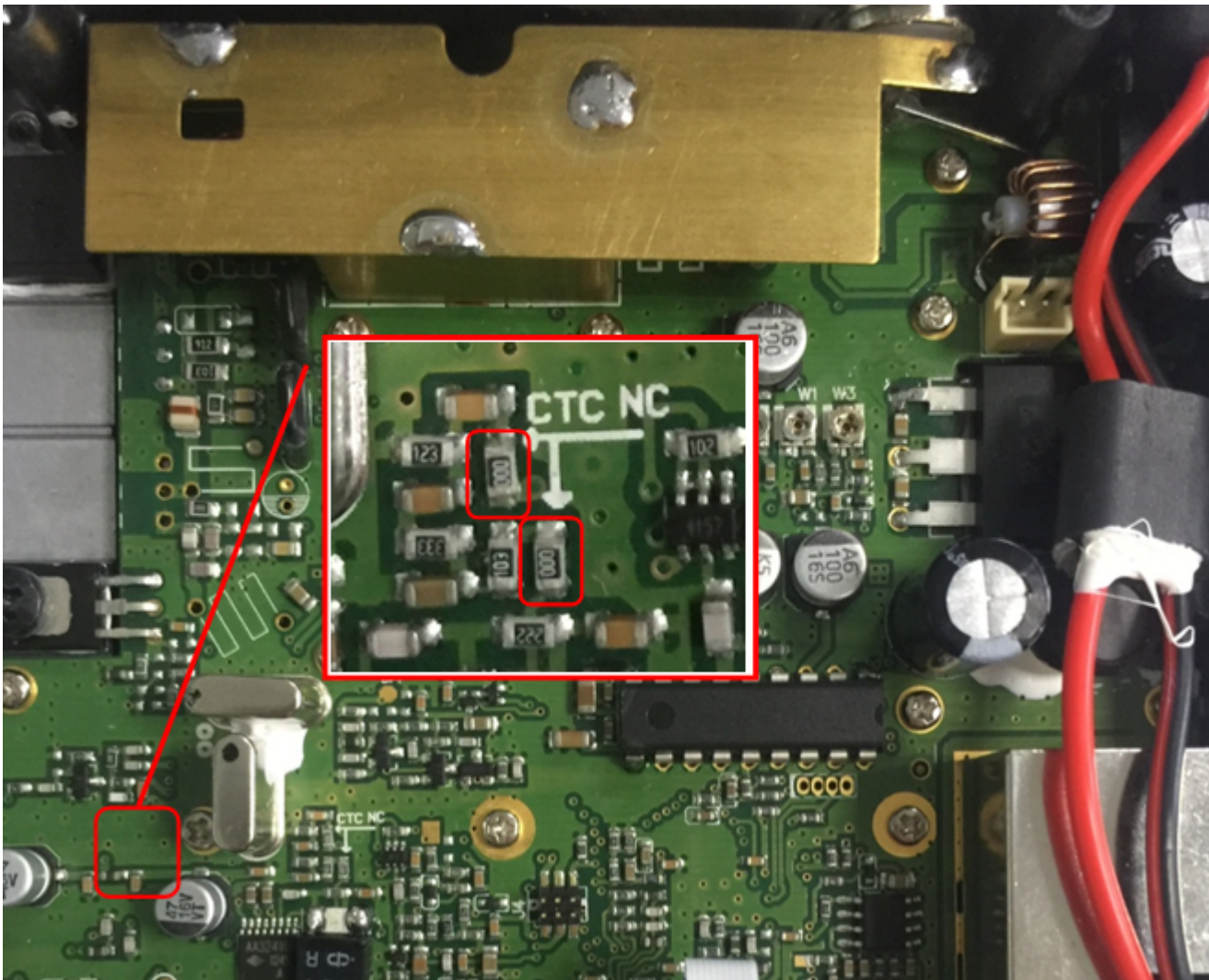
2 years ago Updated

FOLLOW

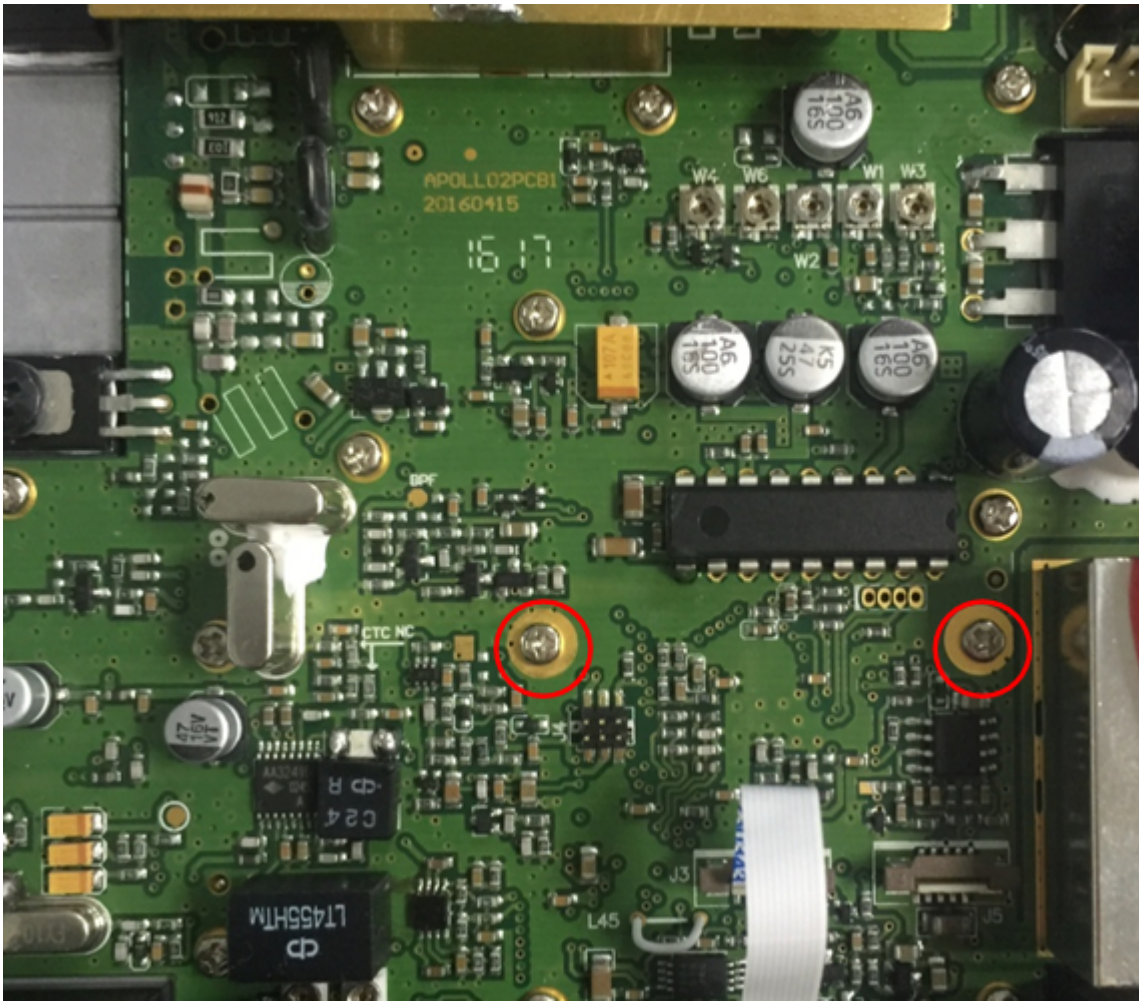
How to add CTCSS in SR-94HPC

1. Remove R254/R255 as show in the photo:

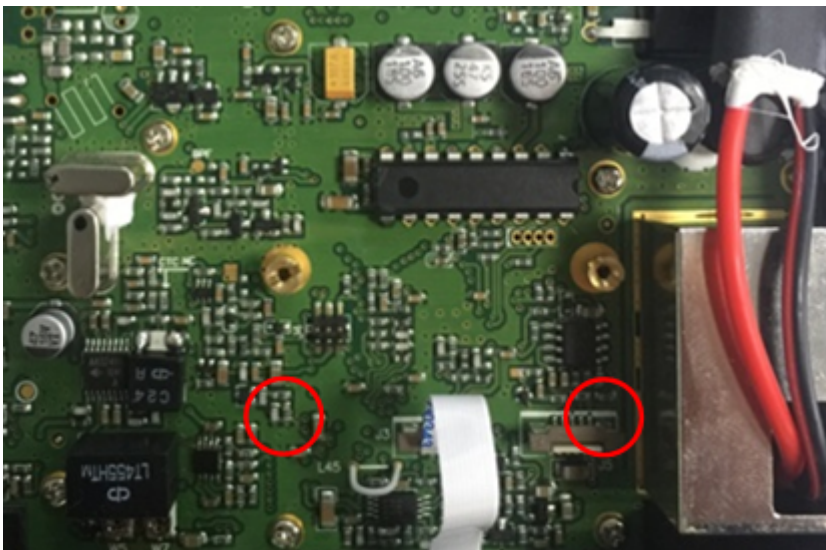
Tips on removing the SMT resistors



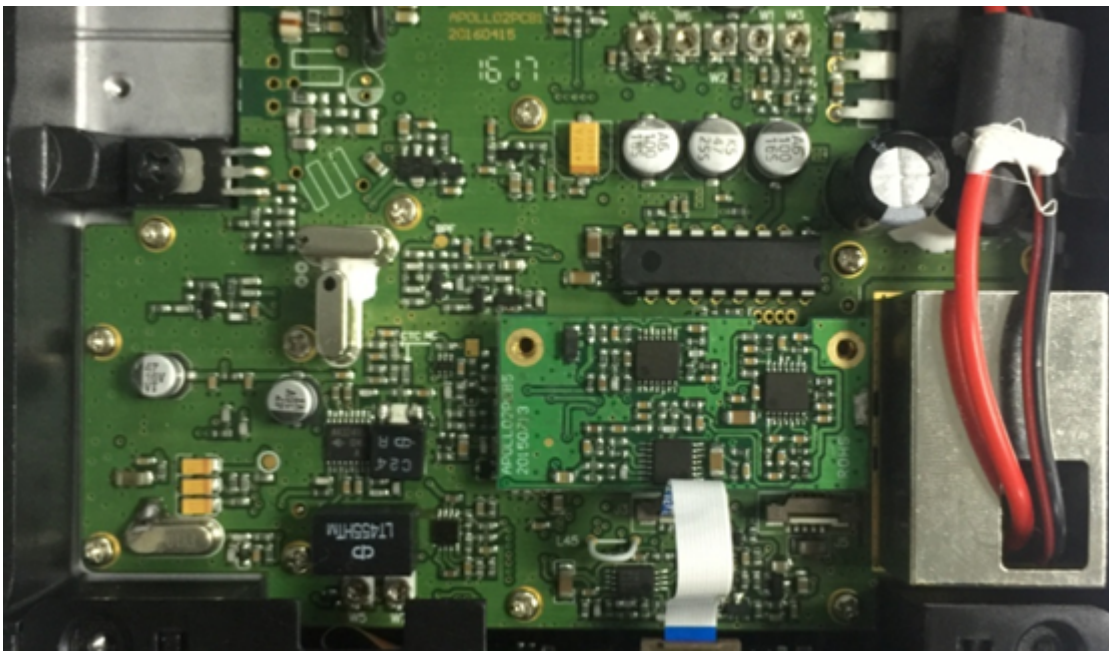
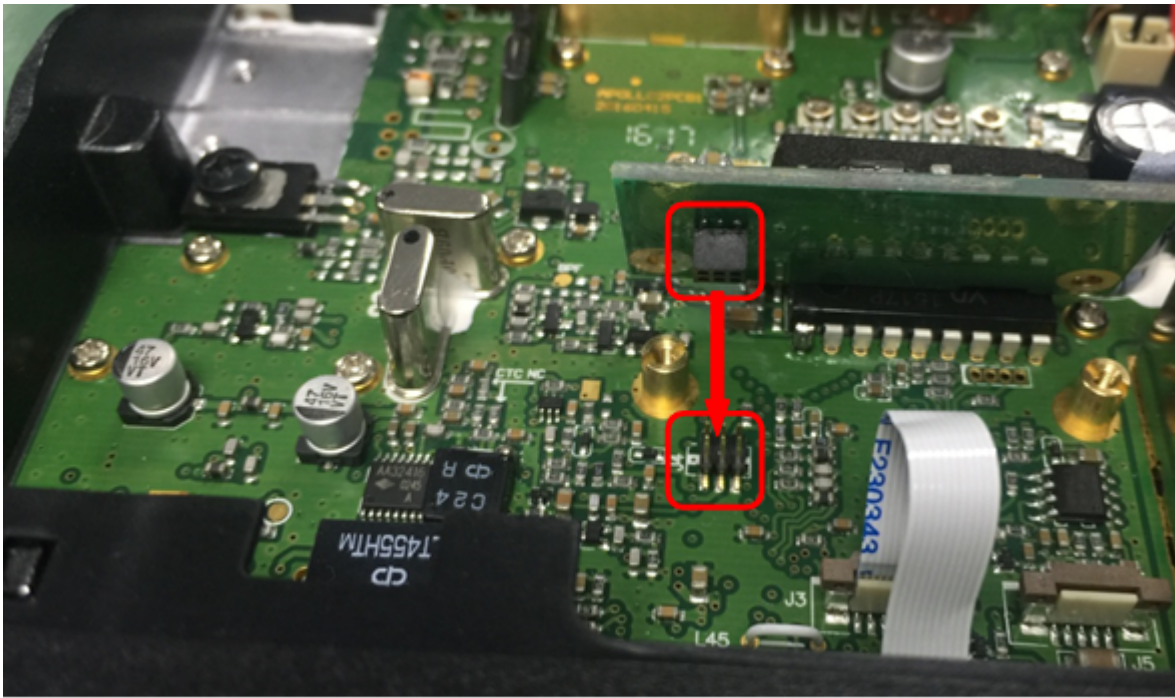
2. Remove this 2 screws but keep them for next steps



3. Install 2 copper pillar:



4. Insert the CTCSS Plug



5. Screw into the copper pillar:

